

PORTFOLIO | 2024

PALMER BERRY

PROFESSIONAL

Wells Street Townhouses	01
East Longmeadow Radio Station	05
Selected Works	09

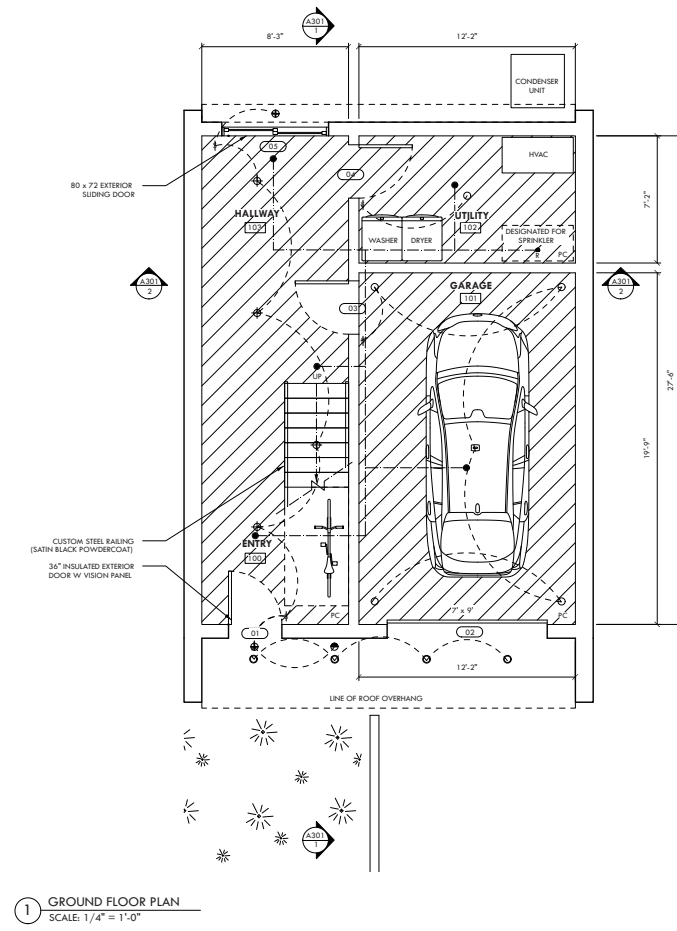
SCHOOL

In-Between: A Cultural Center	13
Aquatic and Wellbeing Center	17

PERSONAL

Selected Works	21
----------------	----

PROFESSIONAL

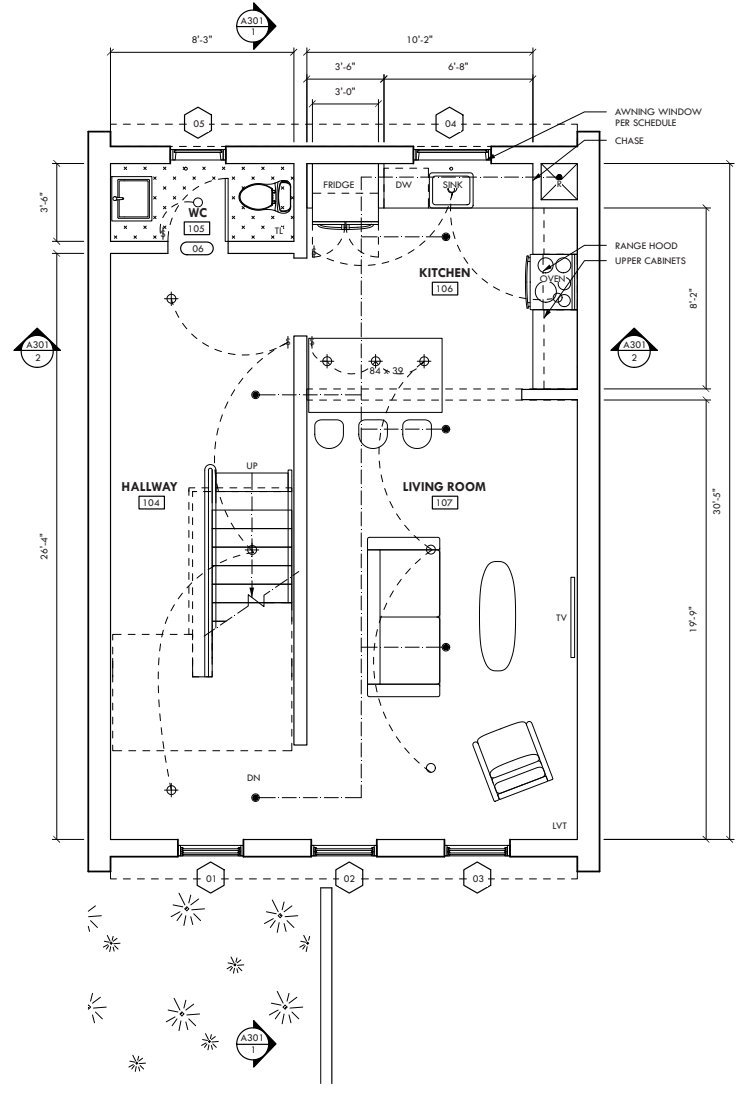


1 GROUND FLOOR PLAN
SCALE: 1/4" = 1'-0"

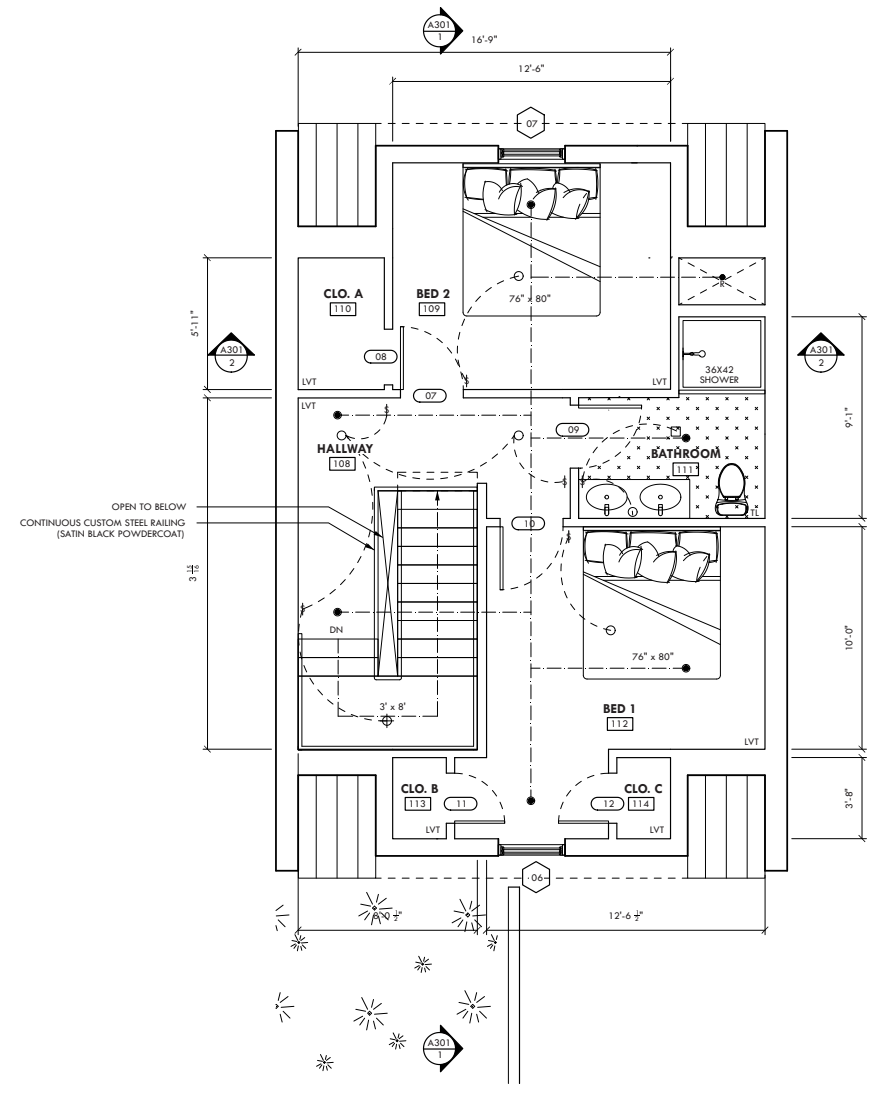
WELLS STREET TOWNHOUSES

These townhouses in Greenfield were designed with the intention of creating a space that embodies the feeling of “coming home.” To achieve this, the ground level was pushed back three feet and the choice of warm tones and wood created a welcoming entryway for inhabitants. Challenges for this project included working with a limited footprint while maintaining unique features such as the continuous staircase.

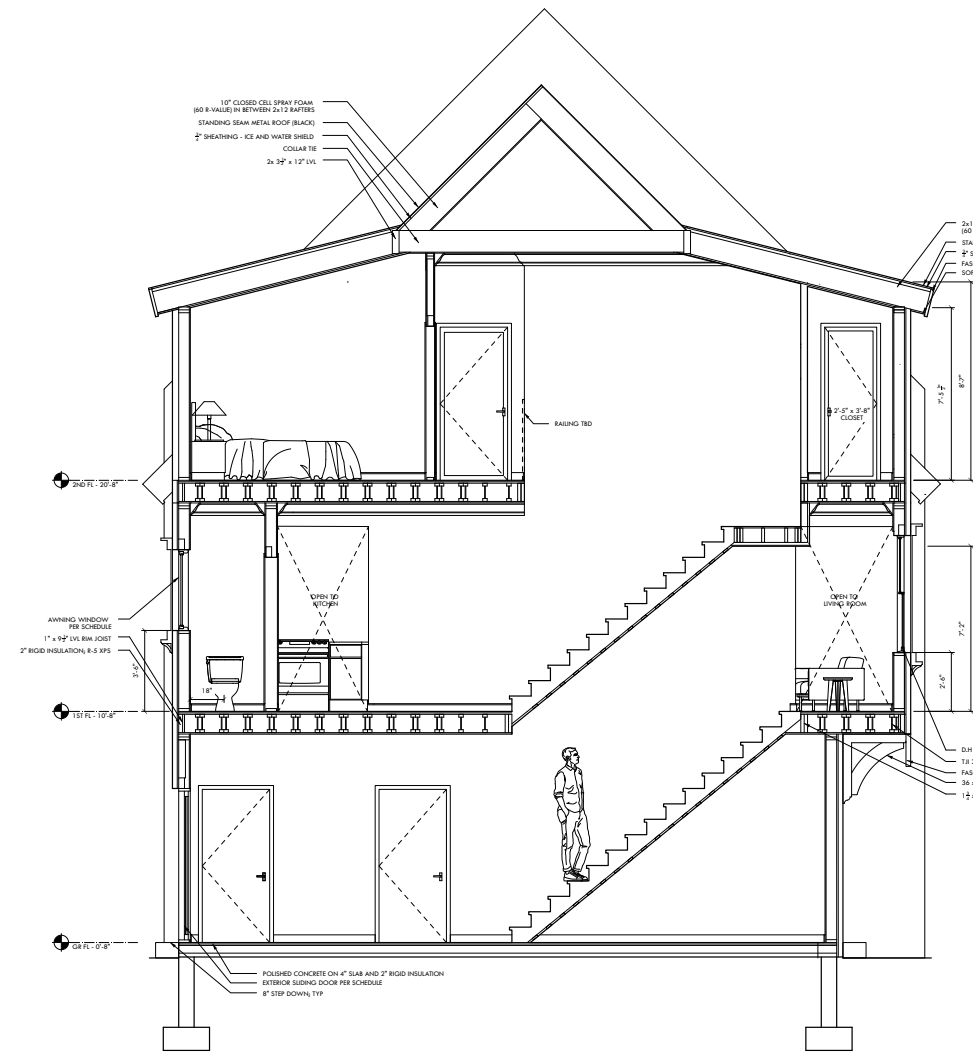
IN COLLABORATION WITH GEOFF ARTHUR || MODEL: PALMER BERRY || RENDER: DANA BROWNE



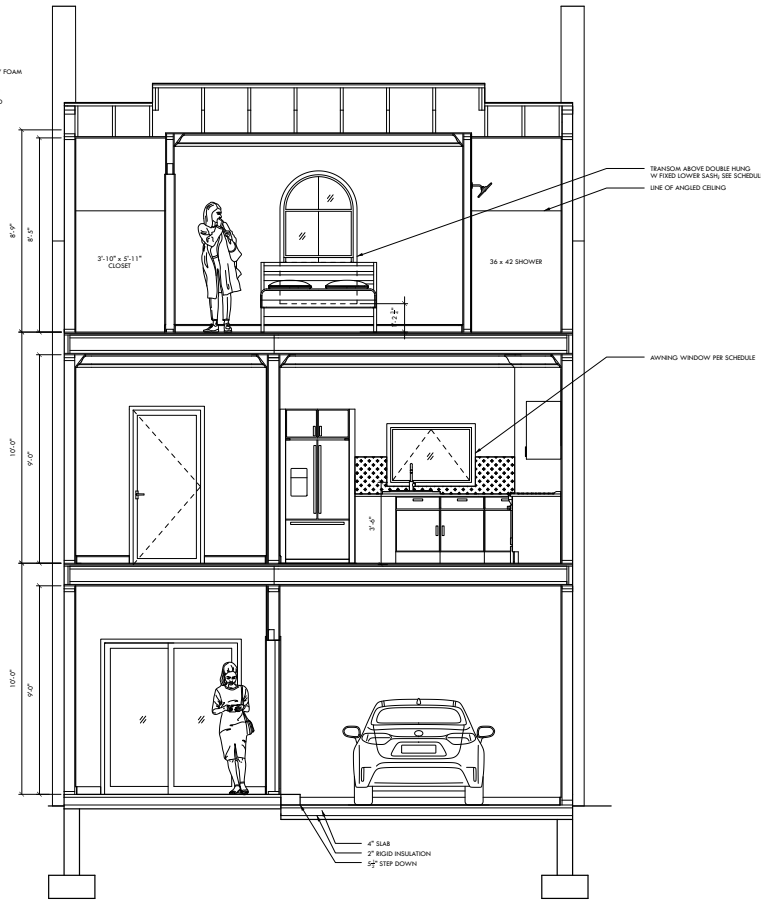
2 FIRST FLOOR PLAN
SCALE: 1/4" = 1'-0"



3 SECOND FLOOR PLAN
SCALE: 1/4" = 1'-0"



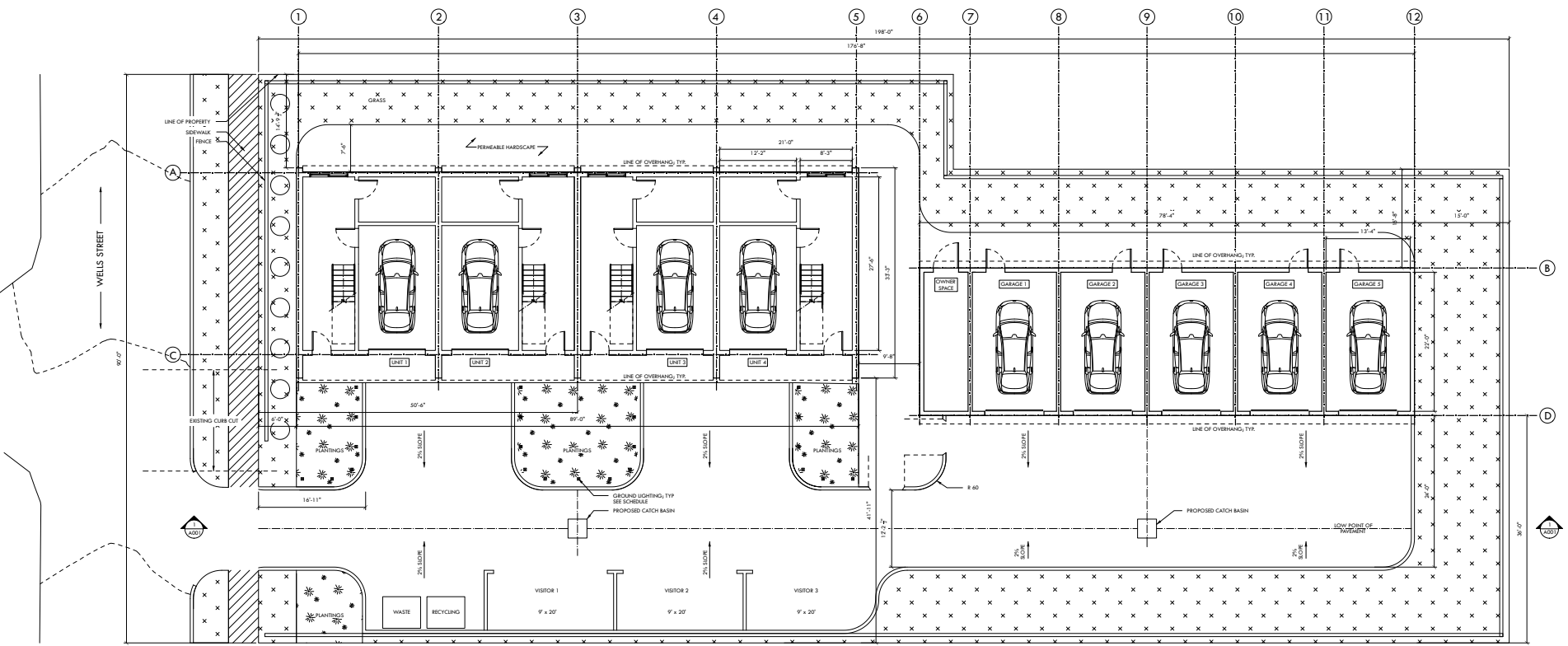
1 LONG SECTION
SCALE: 3/8" = 1"



2 SHORT SECTION
SCALE: 3/8" = 1"



1 FRONT ELEVATION
SCALE: 1/8" = 1'-0"



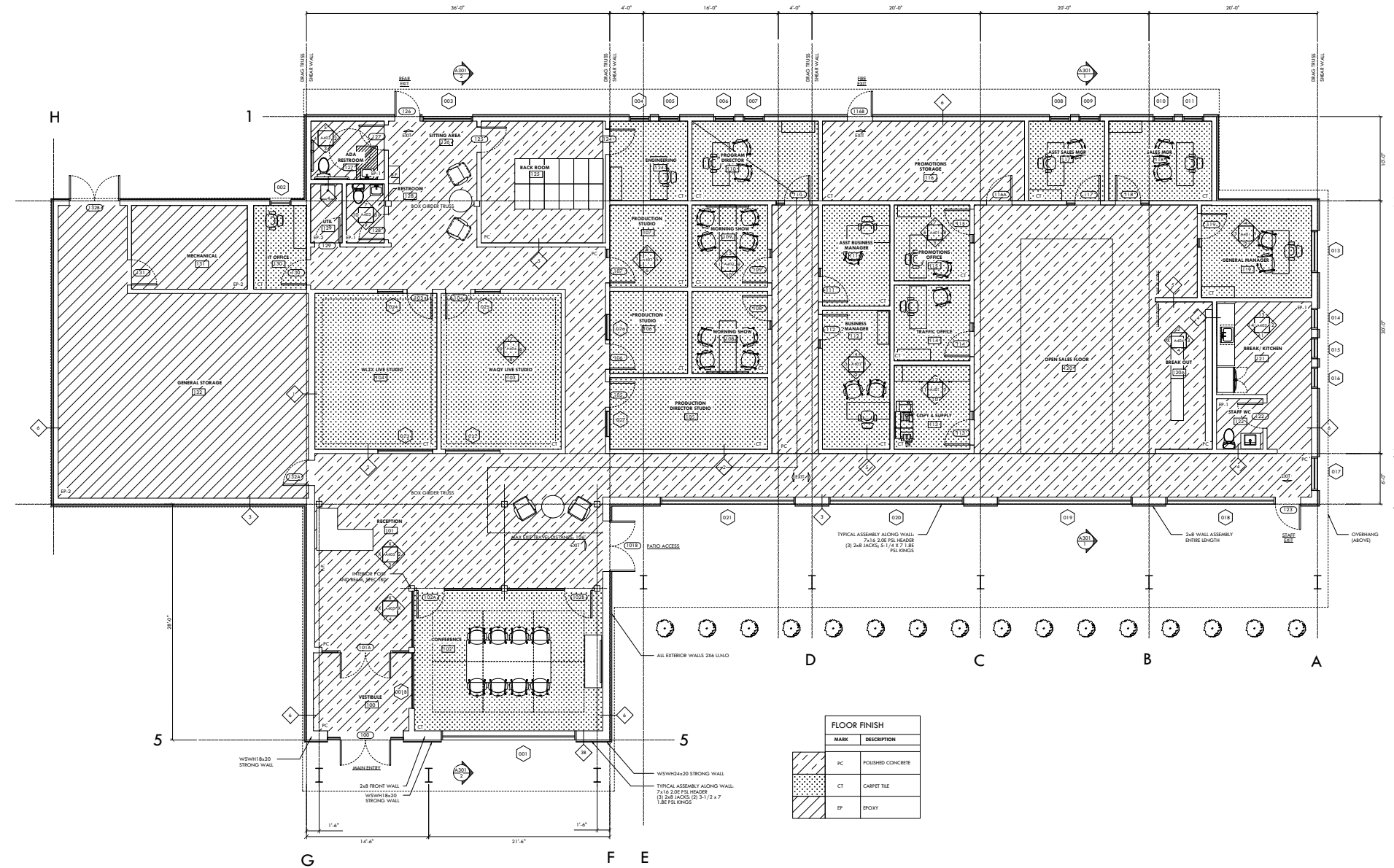
2 SITE PLAN
SCALE: 1/8" = 1'-0"



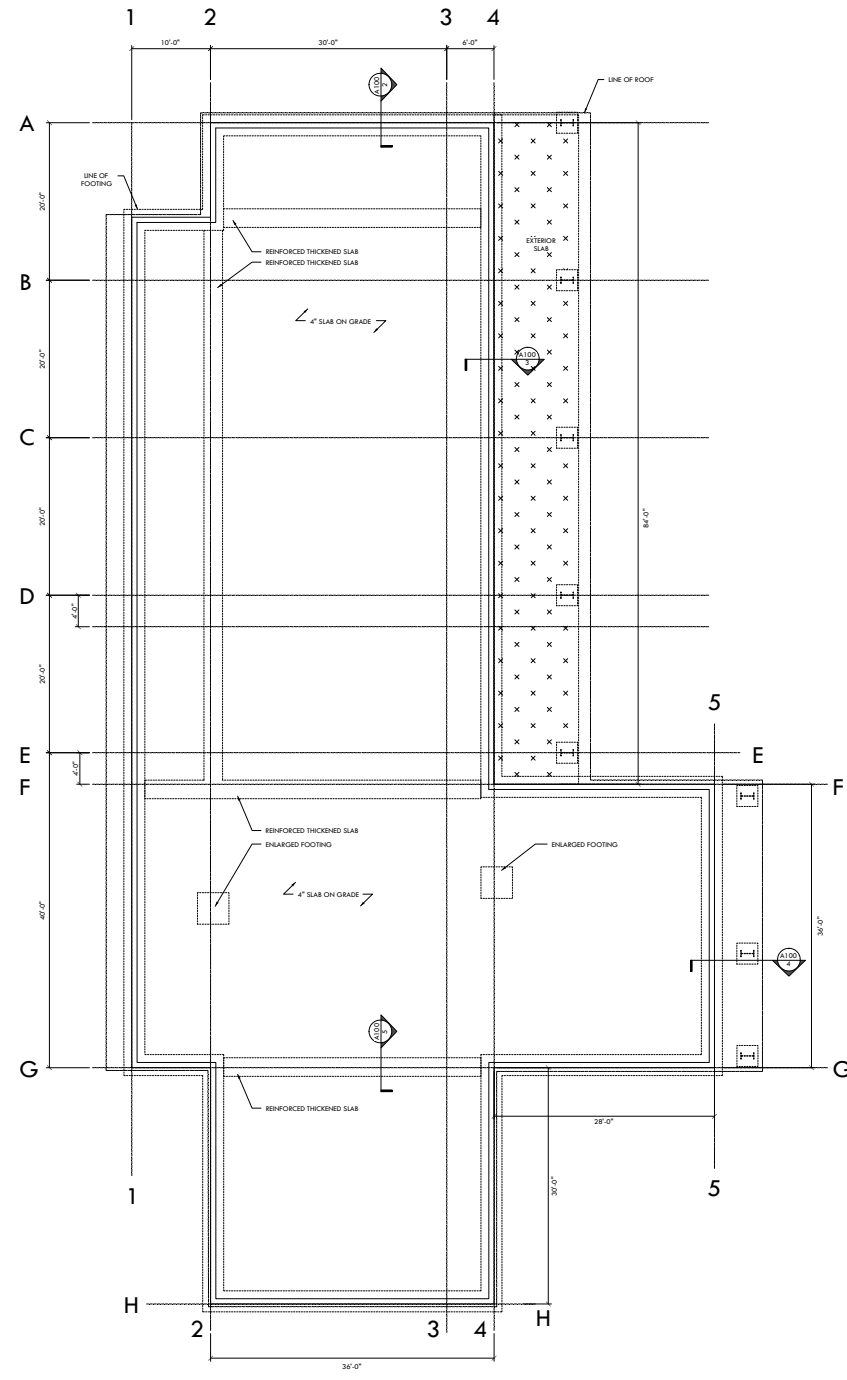
EAST LONGMEADOW RADIO STATION

One of the bigger projects that was worked on was this radio station in East Longmeadow. Currently, the space is split up into two rectangular buildings. The proposed design created a long space that joined everything together. Challenges for this project included designing around the wetland setback and maintaining a specified square footage.

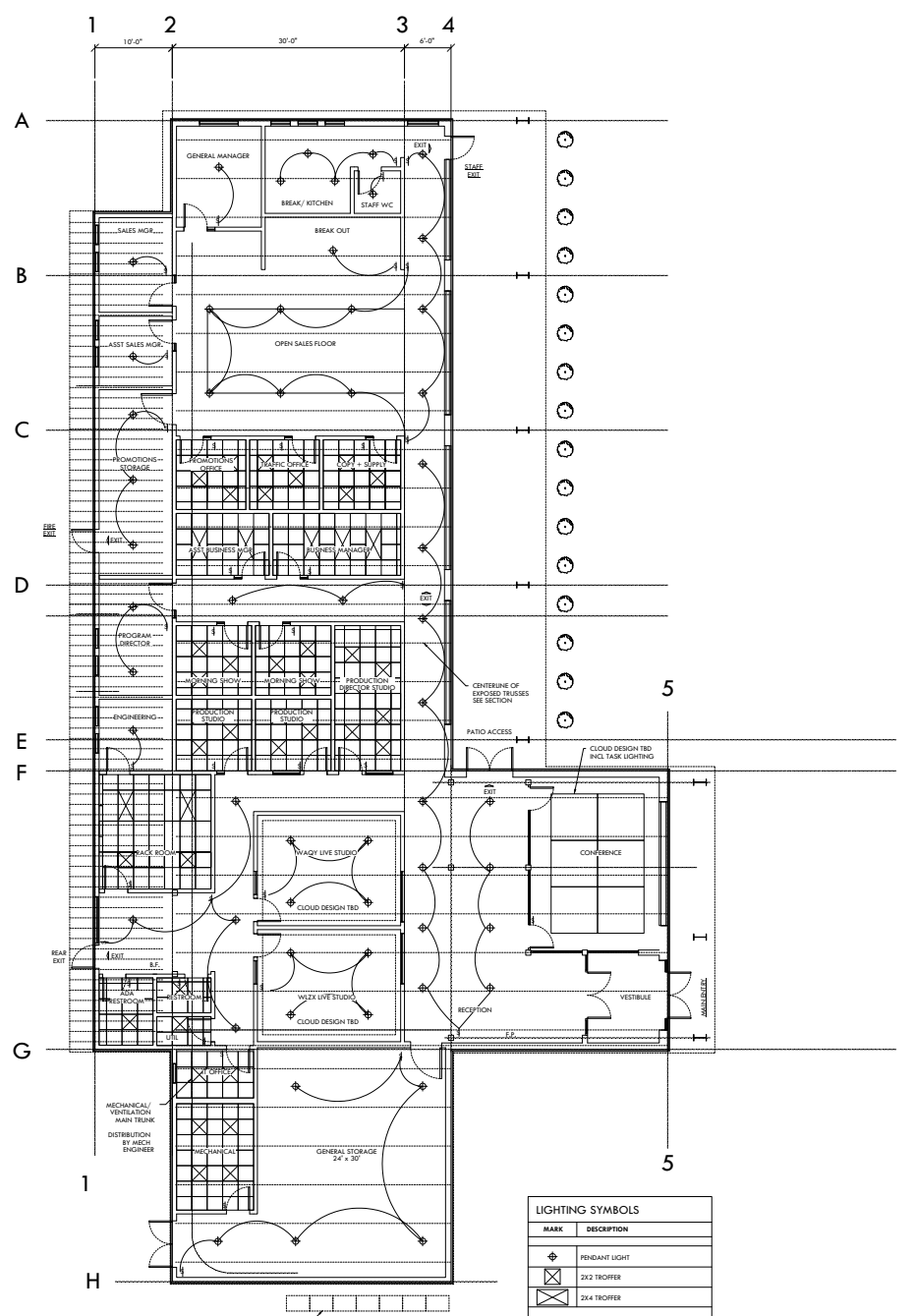
IN COLLABORATION WITH GEOFF ARTHUR AND DANA BROWNE



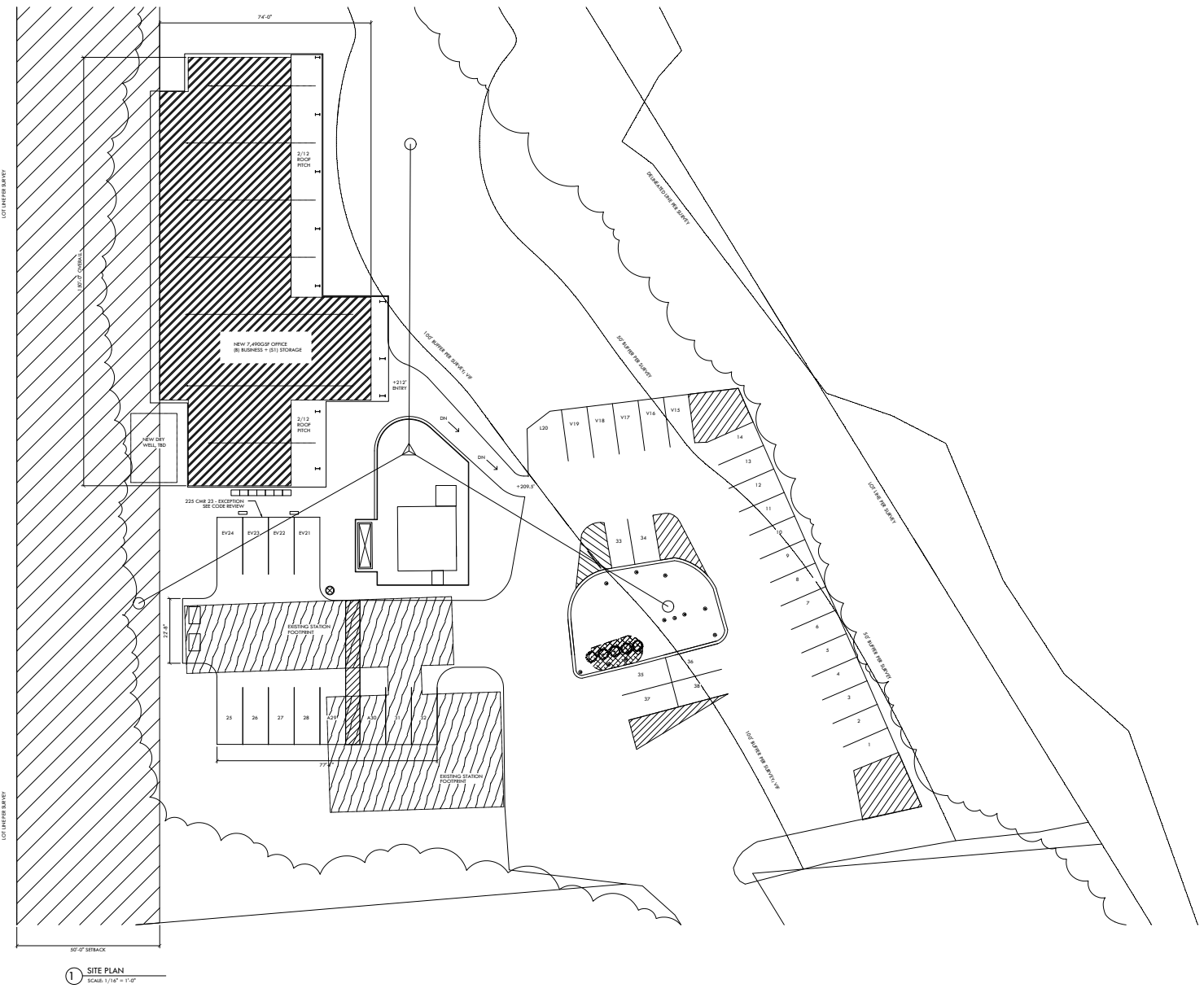
1 FIRST FLOOR PLAN
3/16" = 1'-0"



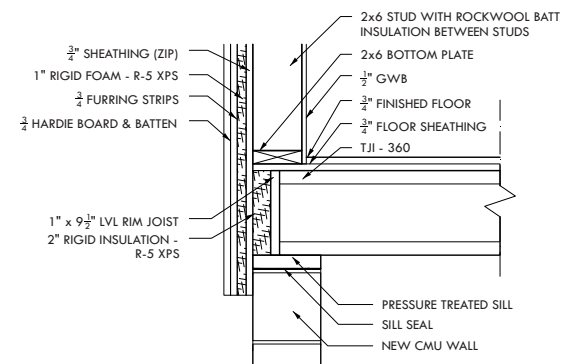
1 FOUNDATION PLAN
SCALE: 1/8" = 1'-0"



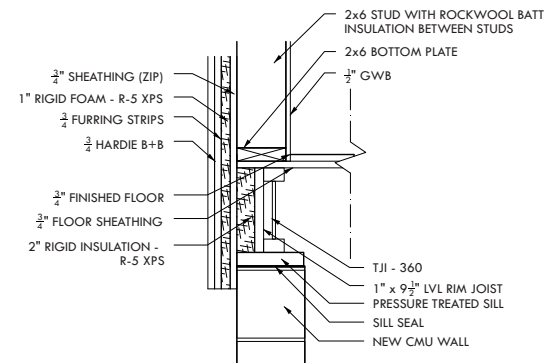
1 REFLECTED CEILING PLAN
SCALE: 1/8" = 1'-0"
AIR TO AIR SYSTEM, TRO
BY MECHANICAL ENGINEER



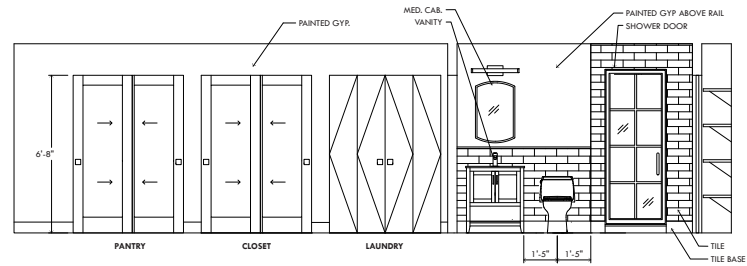
1 SITE PLAN
SCALE: 1/4" = 1'-0"



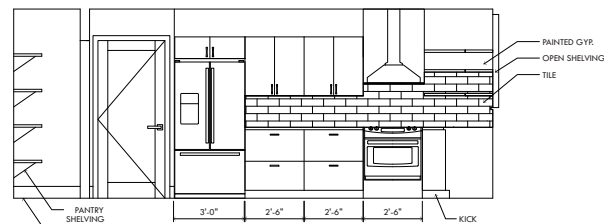
3 FOUNDATION DETAIL
SCALE: 3/4" = 1'-0"



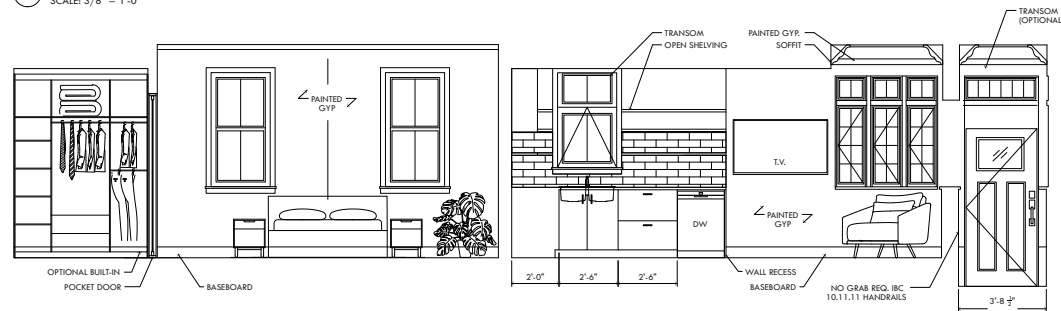
4 FOUNDATION DETAIL
SCALE: 3/4" = 1'-0"



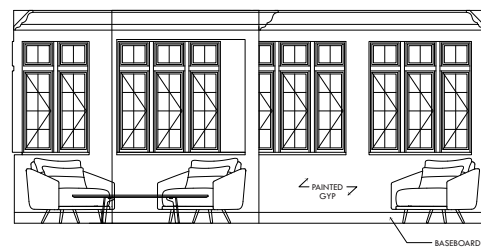
2 UNIT 428 HALLWAY & BATHROOM
SCALE: 3/8" = 1'-0"



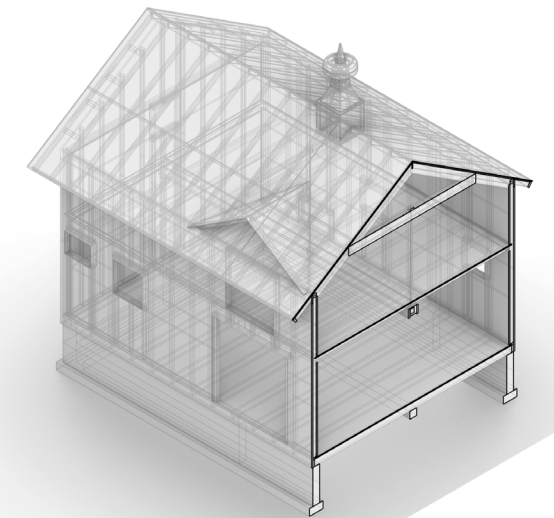
3 UNIT 428 KITCHEN
SCALE: 3/8" = 1'-0"



4 UNIT 428 SECTION
SCALE: 3/8" = 1'-0"



5 UNIT 428 SITTING AREA
SCALE: 3/8" = 1'-0"



SELECTED WORKS

These projects snapshots illustrate the diverse workflows at the firm. Each project was different and presented its own set of challenges. These ranged from construction details, interior elevation drawings, and renders created in Photoshop. Together, these projects highlight the versatility of my skillset.



SCHOOL

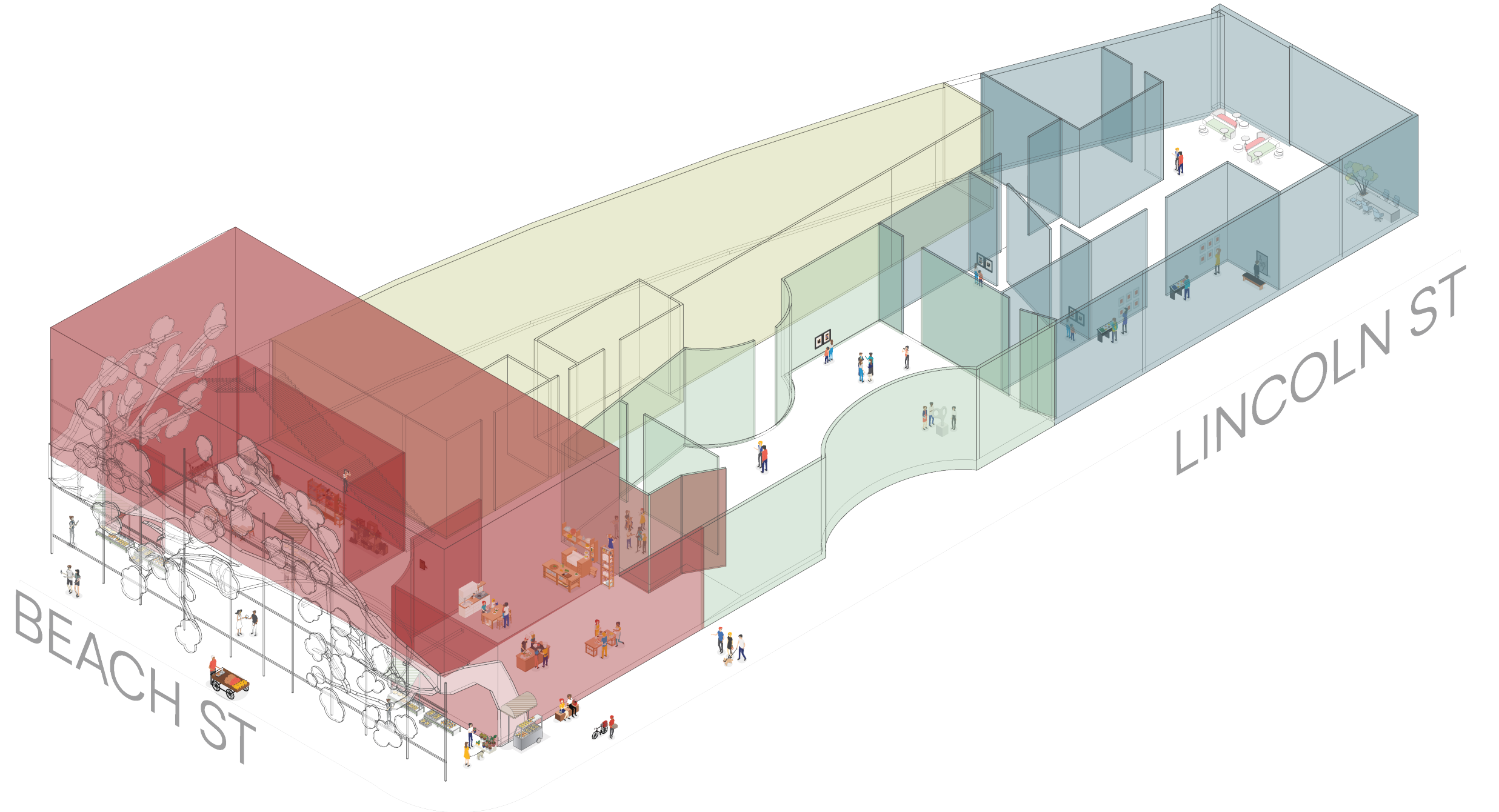
THIS PAGE IS LEFT BLANK INTENTIONALLY

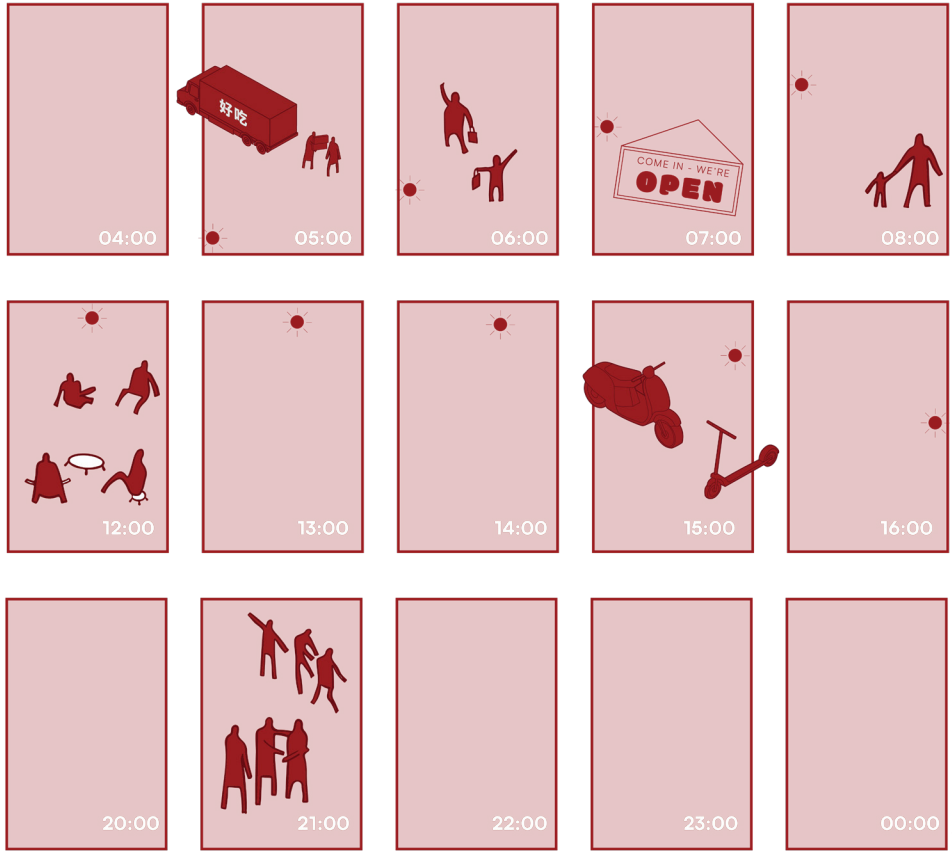
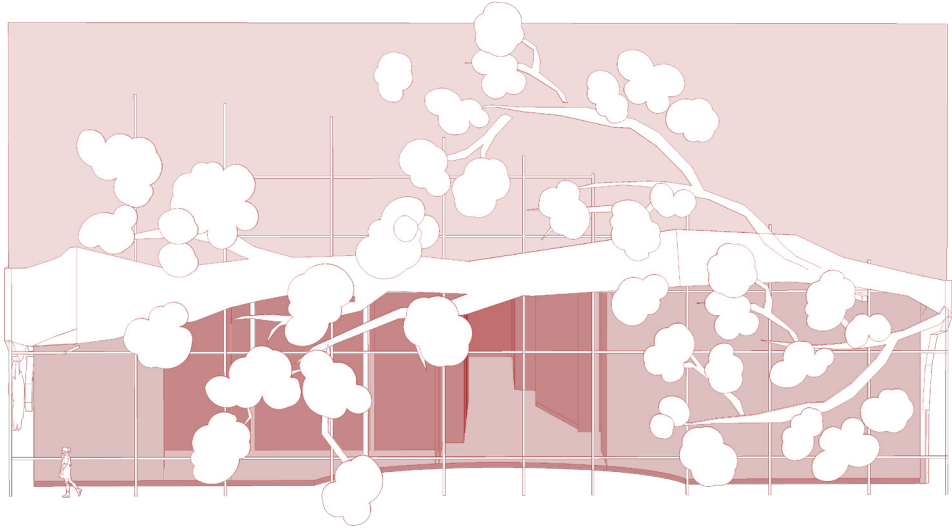
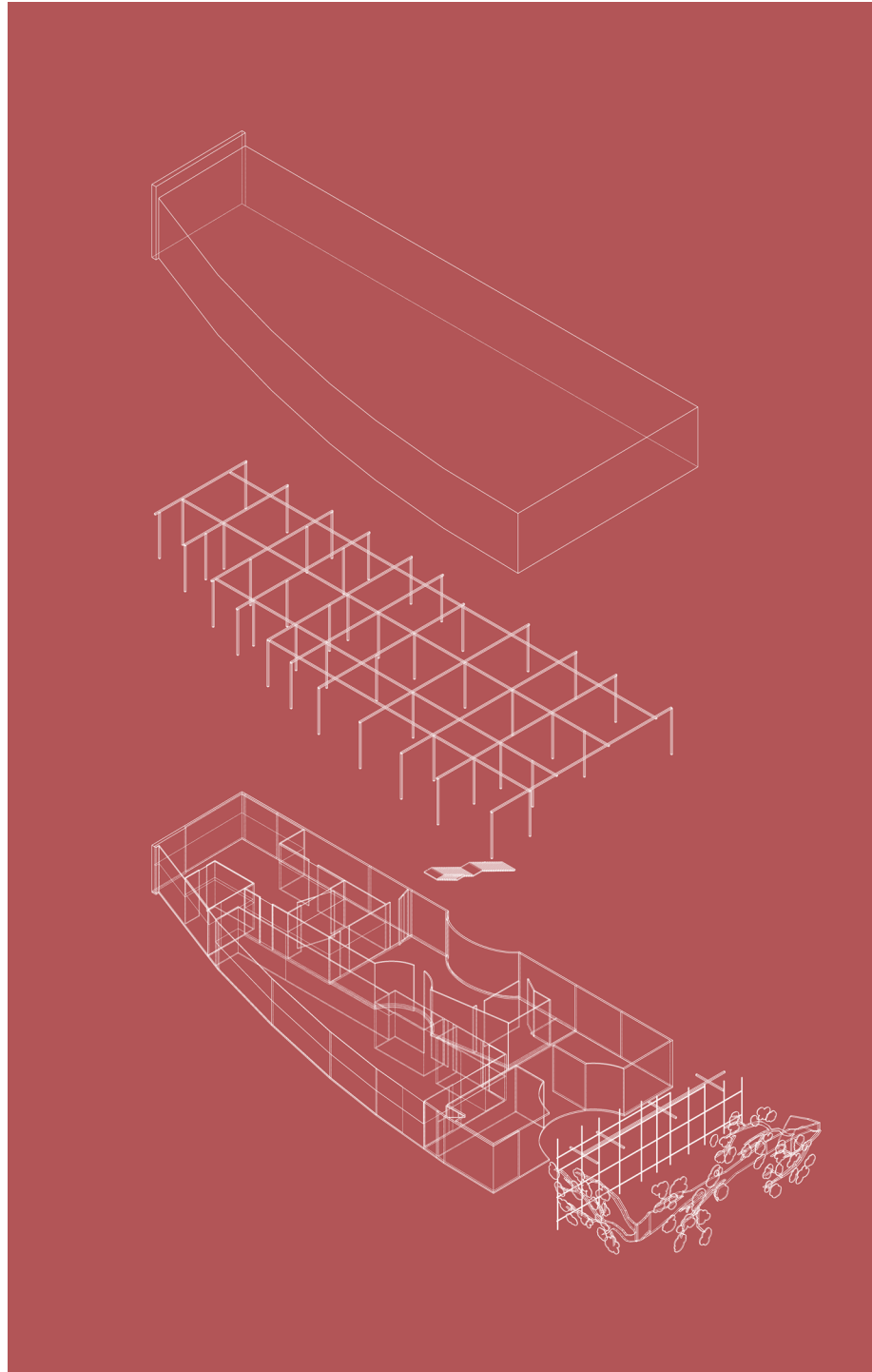
IDENTIFYING CULTURAL AND SPATIAL INTERSECTIONS: THE EXPERIENCE OF THE IN-BETWEEN

My thesis for my Masters degree focused on an exploration of the concept of in-between spaces. This curiosity was fueled by a passion to create a space that would allow people - adoptees in particular - to explore their identity in a community-based setting. Another important aspect of this project was to focus on adaptive-reuse as a key component to the design. A mixed-use building that is located on a corner across from the Chinatown gate in Boston seemed like the perfect location for such an endeavour.

Through this exploration, I developed a passion for learning more about public spaces that aim to bring communities together and share the richness of diversity and culture.

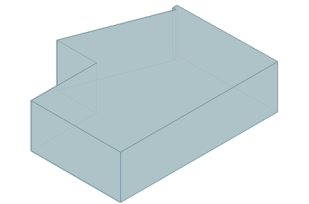
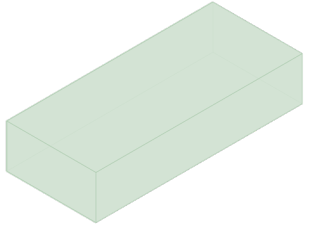
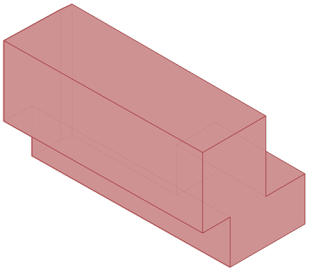
THESIS ADVISOR: ANN MARSHALL





CULINARY EXPERIENCES

- People may come here to cook together, host cooking classes, and simply learn about different food
- The second floor will be a greenhouse dedicated to growing herbs, fruits, and vegetables that are specific to Asian cuisine
- The front facade will host a night market experience throughout the day which will evolve according to seasonality & needs



CONNECTION SPACE

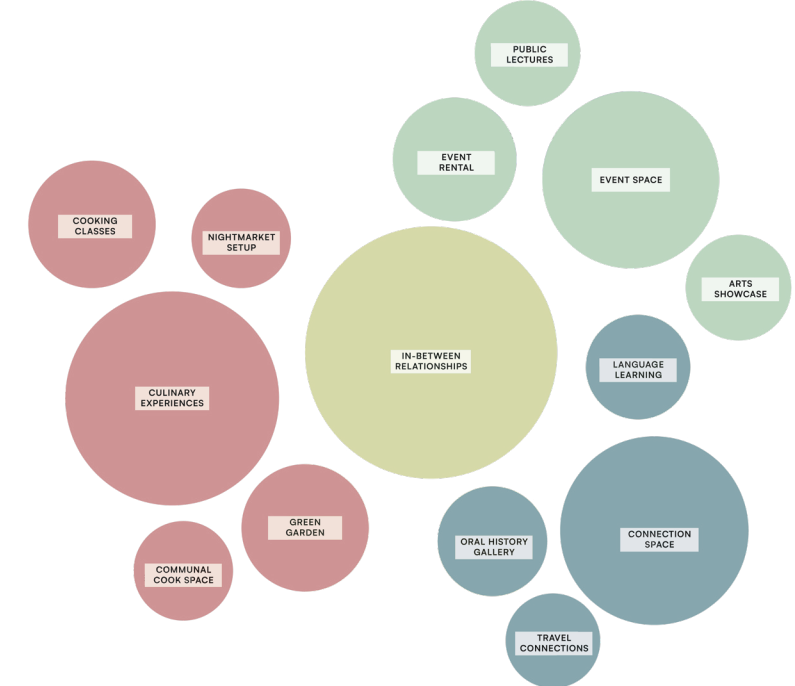
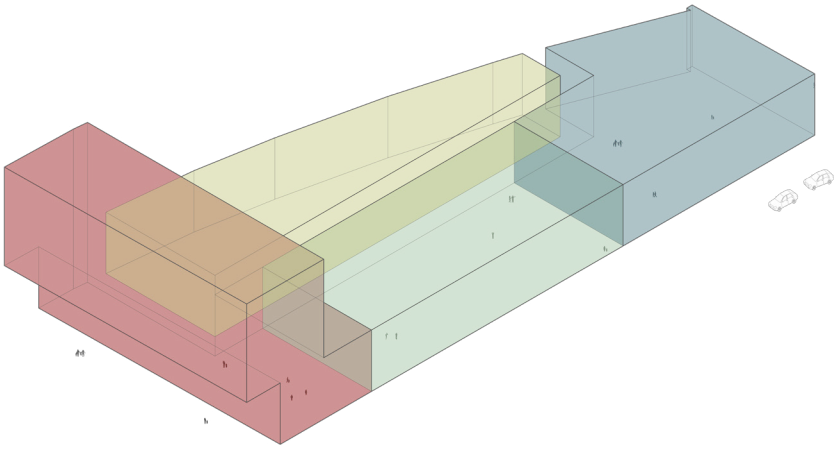
- Adoptees and their guardians / parents may come here to form connections with one another
- People can create an oral history by recording their stories of tradition
- Language programs may choose to have an introductory course here to get people into learning a new language
- Companies that promote travelling to birth countries may be able to help others here

EVENT SPACE

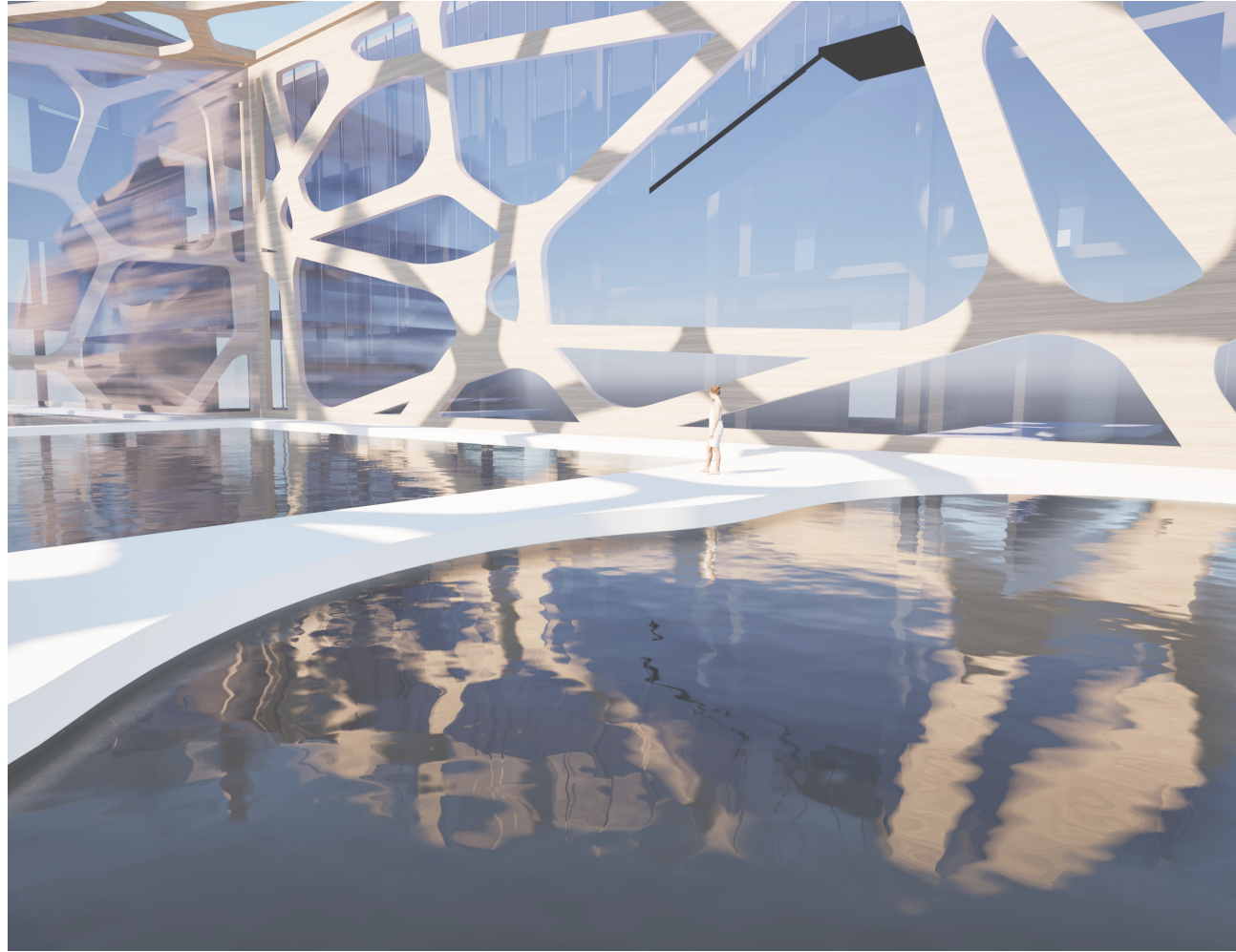
- People may choose to host events or lectures in this space to bring more awareness to the Asian community in Boston
- Local artists / musicians may use this space to showcase their art and host performances
- When not being used by the above, this space can be used as an event space and even has access to the culinary programming

BOH / STORAGE / WC

- General use such as storage for all three spaces
- Washrooms for male, female, and all-genders



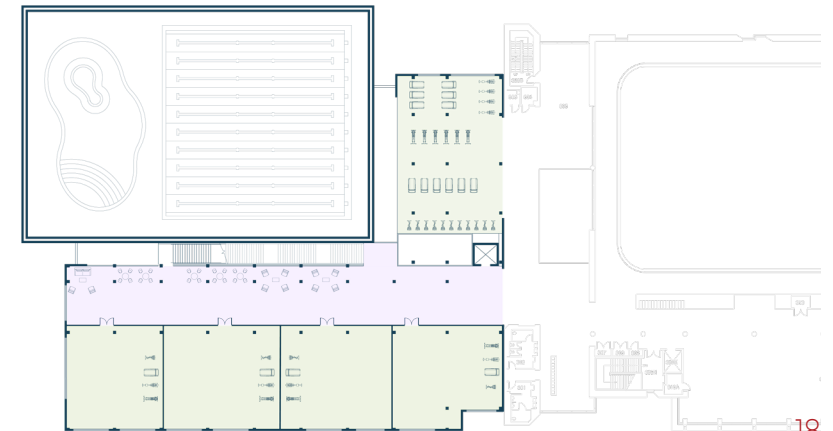
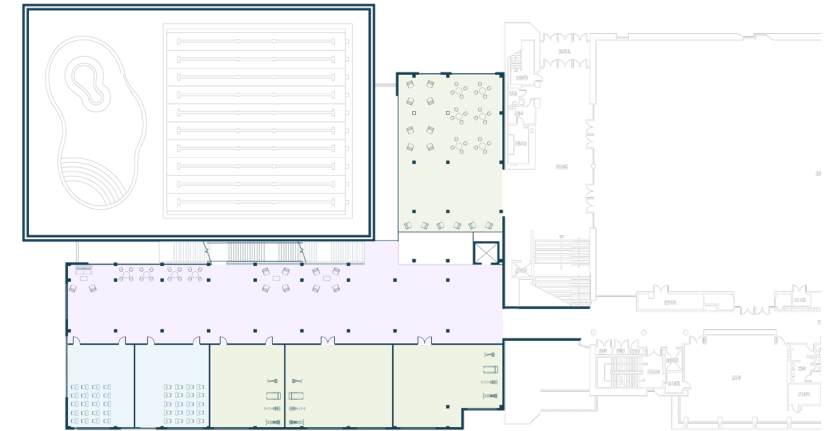
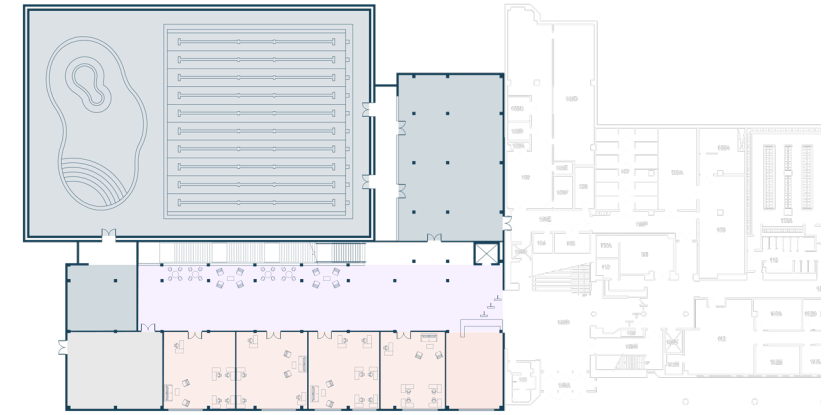
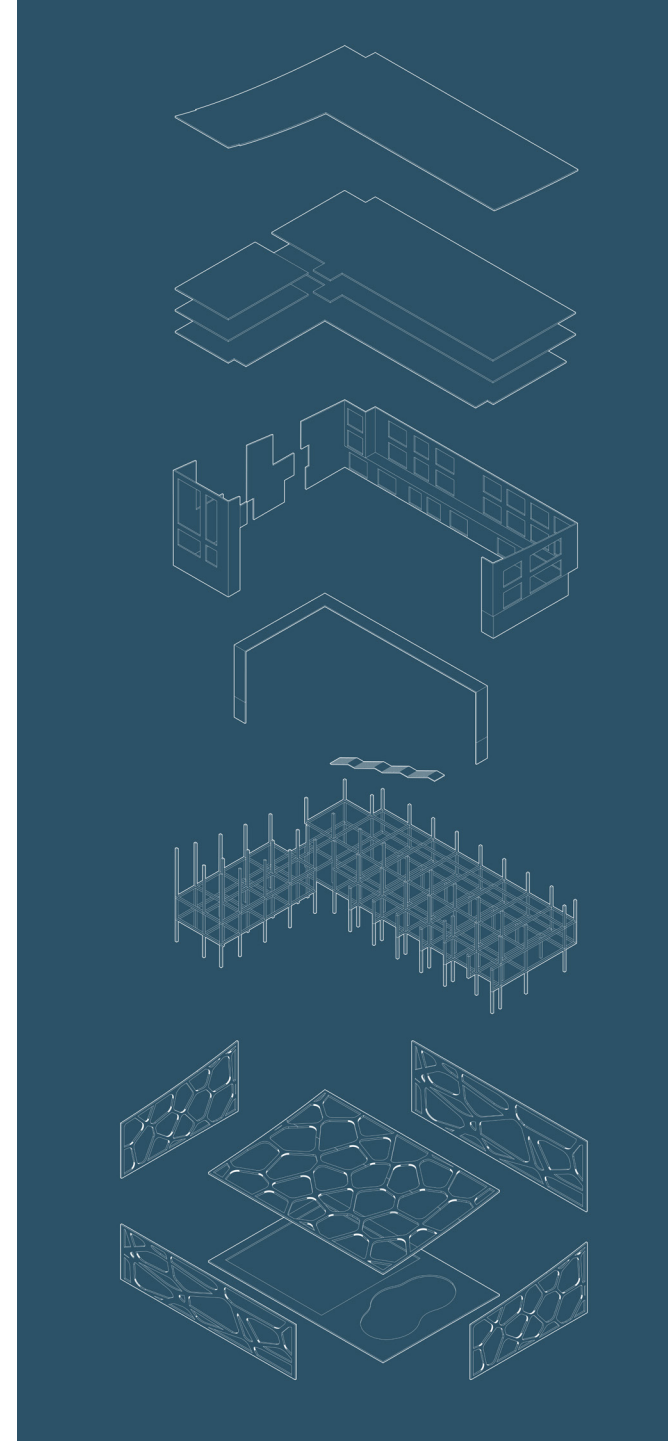
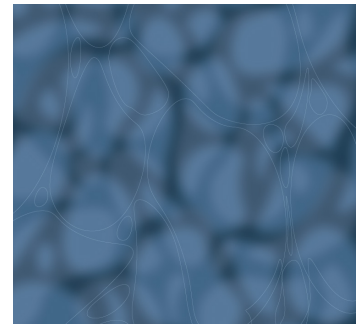
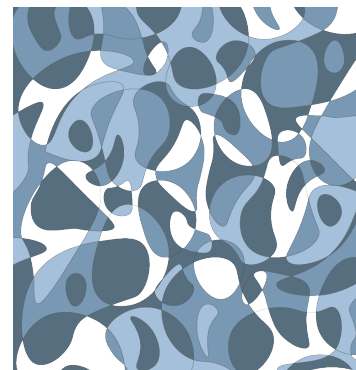
- CULINARY EXPERIENCES
- EVENT SPACE
- CONNECTION SPACE
- BOH / STORAGE / WC
- CIRCULATION



CENTER OF AQUATICS AND WELLBEING

This studio project from my second year at the UMass M.Arch program focused on designing a combined aquatics and wellbeing. Taking inspiration from organic patterns and elements from nature, the natatorium features a shell that imitates the ripples from bodies of water. One crucial element of this exercise was taking a look at how spaces can be organised to suit a spectrum of goals and needs. Keeping in mind that this was not a one-solution-fits-all project, it was important to consider circulation and organisation.

INSTRUCTOR: CARYN BRAUSE



PERSONAL

THIS PAGE IS LEFT BLANK INTENTIONALLY



SELECTED WORKS

Outside of architecture, engaging in other creative outlets help nurture and sustain my cycle of inspiration. Through physical mediums such as pencil or paint or exploring digital tools, I am able to explore freely and push my creativity. These selected works showcase the versatility of my creativity and highlight the range of skill that allows such artistic expression.

PHYSICAL MEDIUMS: PAINT AND COLOUR PENCIL
DIGITAL MEDIUMS: PROCREATE AND ADOBE ILLUSTRATOR

